

# 2020 & 2021 ANNUAL REPORT



## **ALAN'S MISSION STATEMENT**

American Logistics Aid Network saves lives and reduces suffering for disaster survivors by coordinating logistics services and information to improve disaster relief outcomes.



Kathy Fulton  
Executive Director



Mark Richards  
President

## ALAN Board Members

Mark E. Richards, President

Richard Sharpe, Vice President

Mark Cabrera

Michael Gardner

Brent Hutto

Stacey Kobayashi

Mary Long

Robert Martichenko

Penelope Menzies

Tim Osmulski

Natalie Putnam

Elijah Ray

Roger Woody

# FROM ALAN'S LEADERSHIP TEAM

There are many things you could say about the past two years, especially if you're a humanitarian organization like ALAN.

2020 and 2021 proved to be some of the busiest and most challenging chapters in our history. In fact, during that time, there were 43 catastrophic events in the United States that resulted in more than \$1 billion worth of total damage apiece, including:

- the COVID-19 pandemic
- Hurricane Ida, one of the strongest and deadliest storms ever to make landfall in our country
- several devastating tornadoes that swept the Southeast and Midwest
- and a range of wildfires in California, Oregon and Colorado that claimed countless acres and resulted in massive loss of life and property.

But this annual report isn't about those disasters. Not really.

It's about YOU and the extraordinary amount of good ALAN has been able to do because of your gifts.

Just as important, it's about the countless lives that have been changed for the better simply because people like you have cared enough to support us. . . .



## ALAN'S IMPACT IN THE UNITED STATES



14

Disasters



\$9.5M+

Worth of products  
stored or delivered



47

Humanitarian groups  
assisted

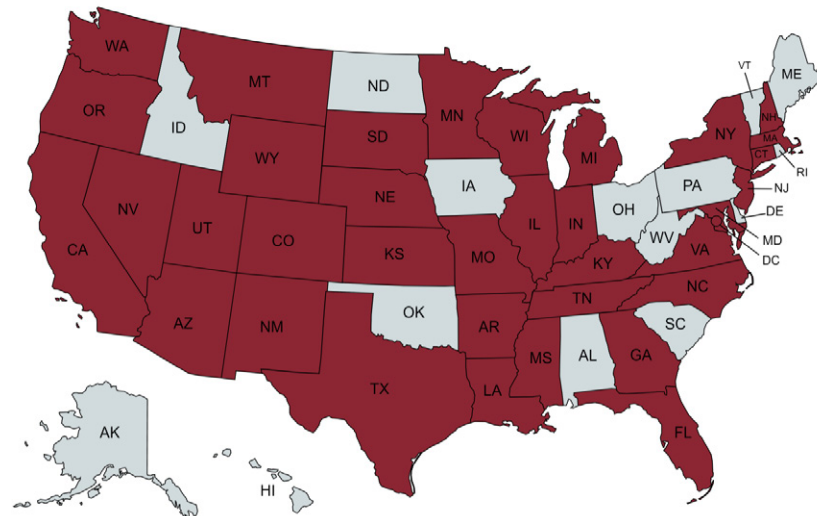
## REAR-VIEW MIRROR: 2020 AND 2021 OPERATIONS AT A GLANCE

The bad news is 2020 and 2021 were hugely catastrophic years. The good news is ALAN was there to provide a variety of supply chain solutions that enabled help and hope to arrive more quickly.

### 14 disasters

During 2020 and 2021, we activated for most of the major disasters that hit the United States, as well as for numerous other catastrophic events that occurred in other parts of the world. Our most notable outreach activities involved the COVID-19 pandemic, Tennessee floods, California fires, and December tornadoes as well as hurricanes Ida, Sally, Laura, Isaias, Delta and the Tennessee tornado. However we also supported ongoing recovery efforts for survivors of previous years' disasters such as Hurricane Dorian (2019) and Hurricane Florence (2018).

Here's a quick view of ALAN's U.S. impact during 2020 and 2021. ALAN provided logistics assistance to all states highlighted in dark red.





## **More than \$9.5 million worth of products stored or delivered**

Relief and recovery materials run the gamut, and so did the items that ALAN facilitated the storage, transportation, handling and donation of during 2020 and 2021. In addition to “the usual” (essentials such as food, water, tarps, clean-up supplies and medicine and hygiene products), these items included:

- millions of dollars’ worth of pet food and supplies to assist animal shelters across the country
- countless pieces of PPE to help keep medical professionals and essential workers safe
- dozens of water collection barrels for Native American tribes
- tens of thousands of boxes to assist with the sorting and distribution of food and other relief items
- and dozens of refrigerated trailer units to help various food banks distribute food more efficiently.



## 47 humanitarian groups assisted

The non-profit groups that ALAN works with span every type of survivor, service, and need imaginable, from groups that work with animals, children and individuals with disabilities to those who work to eradicate hunger, poverty, and disease. During 2020 and 2021, ALAN assisted approximately 47 of these humanitarian organizations, connecting them with everything from warehousing space and services to information, transportation, equipment and logistics expertise.

**YOU DON'T NEED  
A REASON  
TO HELP PEOPLE**



Adventist Development And Relief Agency  
Adventist Community Services  
Afya Foundation  
Antinanco Earth Arts School  
Arkansas Food Bank  
Catholic Charities  
Community Food Bank Of New Jersey  
Connected Chef  
Culture Aid NOLA  
Dallas Police Department  
elFaro Church  
Falls Church Anglican

Feeding America  
Feed The Children  
FEMA  
Filling In The Blanks  
Friends Of Disabled Adults And Children  
Greater Good  
Good Samaritans Of Garland  
Habitat For Humanity  
International Technology Disaster Resource Center  
International Medical Corps  
Jesus Alliance  
Jersey City Rapid Maker Response Group

Joshua's Heart Foundation  
Mennonite Disaster Relief  
Medshare  
National Association Of Christian Churches  
New Covenant Community Center And Food Pantry  
New Jersey VOAD  
Oroville Hope Center  
Project Hope  
Rebuild Bay County  
Rolling Harvest Food Rescue  
Salvation Army  
Southwest Texas Regional Advisory Council

Ssubi Foundation  
Sunday Friends  
Tennessee Baptist Relief  
Tennessee Emergency Management Agency  
Unity In Disasters  
United Methodist Community On Relief  
Volunteer Tennessee  
World Emergency Relief  
World Hope International  
World Of Giving  
World Vision

## **6 pieces of industrial equipment, 60,000 boxes/bags provided; 2 large-scale product storage and staging needs fulfilled**

When various humanitarian organizations needed force enablers to assist with product distribution, 10 ALAN partners stepped up with the loan or permanent donation of industrial equipment - and the gift of countless boxes and bags. Among other things, these game-changing donations helped many food banks do a better job of addressing the massive influx in product donations and demand they received as a result of the COVID-19 pandemic.

Two generous ALAN partners also stepped up with critical donations of warehousing and container space so that temporary hospital facilities to treat COVID-19 patients could be rapidly established in New York City and Detroit.

## **60 loads carried/78,000 truck miles moved**

Year after year, over-the-road transportation continues to be ALAN's single most requested service. During 2020 and 2021 more than 32 generous companies answered our calls to help carry critical relief and recovery supplies to more than 55 disaster-impacted destinations.



## ALAN'S IMPACT IN THE UNITED STATES



15

Disaster simulation exercises



49

Collaborative conference calls



1

New supply chain visibility dashboard tool

## REAR-VIEW MIRROR: ALAN'S 2020 AND 2021 OTHER KEY ACTIVITIES AT A GLANCE

When it comes to disaster relief, activities like education, training, preparation, and awareness aren't just "nice to haves." They're essential tools that can play a huge role in minimizing damages while hastening the road to recovery. That's why ALAN made it a point to educate and communicate in a wide variety of ways throughout 2020 and 2021.

### **15 disaster simulation exercises; 58 speeches and panel discussions**

Nearly 500 supply chain, emergency management, and non-profit professionals and students participated in ALAN's disaster simulation game – a two-hour, hands-on learning session that we facilitated 15 times. In addition, ALAN representatives delivered or participated in 58 educational speeches, panel discussions or webinars, reaching a cross-sector of audiences and interests ranging from material handling equipment to supply chain resilience.

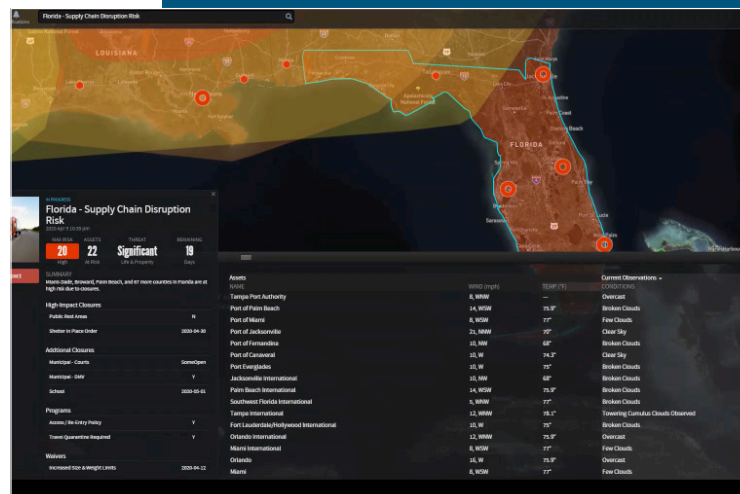
### **49 collaborative conference calls attended by more than 50 organizations**

During the early parts of the pandemic, ALAN began facilitating cross-industry discussion of critical supply chain activities. Two years later, these calls continue to be held bi-weekly, with topics ranging from freight markets and labor challenges to cyber-threats. All of ALAN's association partners are invited to attend these calls, which have played a key role in facilitating information flow and enabling participants to better understand the current supply chain landscape and prepare, collaborate and respond to circumstances more effectively.



## 1 new supply chain visibility dashboard

Several years of planning, programming and analysis all came together in spring 2020, when ALAN's Supply Chain Intelligence Center – an advanced disaster visibility dashboard created in partnership with Everstream Analytics – officially went live. Today more than 650 subscribers have access to this free tool and its 132,000 critical data points, enabling them to get real-time information about everything from the status of roads, ports and airports to the latest policy changes at national, state, local and county levels.



## Extensive disaster messaging

Throughout 2020 and 2021, ALAN got the word out about everything from the latest disaster-relief needs to the importance of safety and preparation by creating and distributing more than 1,160 blogs, news releases, social media posts, media interviews and outreach messages. ALAN representatives also attended or exhibited at 10 conferences or educational events, allowing us to significantly expand and strengthen our working network and connect with a broader range of problem-solving resources.

Want to learn more? Subscribe to ALAN's upcoming monthly newsletter, bookmark our website ([www.alanaid.org](http://www.alanaid.org)) or visit our Disaster Micro-site ([www.alanaid.org/operations](http://www.alanaid.org/operations)) to view the latest operational needs.

## ALAN'S PARTICIPATION IN THE SUPPLY CHAIN ANALYSIS NETWORK

Since 2019, ALAN has served as a key member of the Ecosystem Assessment team for the Supply Chain Analysis Network (SCAN). SCAN is a research, assessment, and decision-support initiative that helps the Federal Emergency Management Agency's (FEMA) Logistics Management Directorate (LMD) understand private-sector demand and supply networks during disasters. When necessary, it provides actionable information to help FEMA LMD make decisions that will facilitate the stabilization and/or restoration of critical supply chain networks that are needed to support survivors. We are proud to be part of this landmark initiative.



# HONORING ALAN'S 2020 AND 2021 HUMANITARIAN LOGISTICS AWARD-WINNERS

Each September, ALAN is pleased to present its Humanitarian Logistics Awards. Created in 2017, these awards honor individuals and organizations that have demonstrated an ongoing and sustained commitment to helping others in their time of greatest need.

Please join us in congratulating our 2020 and 2021 winners – and in celebrating their extraordinary generosity. And if you know of a particularly deserving recipient for next year's awards, please consider nominating them when nominations open in spring 2022.

## OUTSTANDING CONTRIBUTION TO DISASTER RELIEF AWARD

American Trucking Associations  
Bergen Logistics  
CEVA Logistics  
Core-Mark International  
Hub Group  
J.B. Hunt Transport Services  
Palmer Logistics  
Uber Freight  
Western Union Foundation

## RESEARCH AND ACADEMIC CONTRIBUTIONS AWARD

Dr. Gyöngyi Kovács of Hanken School  
of Economics  
Dr. Hossein Zarei of Coventry University  
Dr. Jose Holguin-Veras of Rensselaer  
Polytechnic Institute University

## DIRECTOR'S PARTNERSHIP AWARD

Truckstop.com  
Tucker Company Worldwide

## LIFETIME ACHIEVEMENT AWARD

Gary LeBlanc of Mercy Chefs

## EMPLOYEE ENGAGEMENT AWARD

Everstream Analytics  
Surge Transportation

## STUDENT ENGAGEMENT AWARD

Students and staff from the W.P. Carrey  
School of Business at Arizona State  
University, the University of Tennessee,  
Knoxville, and the University of  
Wisconsin, Madison

## SPECIAL RECOGNITION AWARD FOR INNOVATION IN HUMANITARIAN RESPONSE

Leah Beaulac

# THE ODOMETER: 2020 AND 2021 FINANCIALS

At ALAN, we work hard to make every donated penny count – so much so that we’ve been able to deliver an average of \$72 in aid for every dollar spent and help provide more than \$100 million worth of aid over the life of our organization.

Here’s a closer look at what that meant for our organization and its bottom line during 2020 and 2021.

<b>REVENUE, PUBLIC SUPPORT, AND OTHER INCOME</b>	<b>2021</b>	<b>2020</b>
Donations and Sponsorships	\$139,442	\$161,622
In-Kind Contributions	\$160,000	\$130,000
Other Income	\$77,562	\$193,544
TOTAL REVENUE, PUBLIC SUPPORT, AND OTHER INCOME	\$377,004	\$485,166
TOTAL EXPENSES	\$384,008	\$407,295
Change in Net Assets	\$(7,004)	\$77,871
Net Assets, Beginning of the Year	\$190,030	\$112,159
Net Assets, End of the Year	\$183,026	\$190,030



---

# THE DASHBOARD: LOOKING AHEAD

When most people think about disasters, they think of piles of debris, items destroyed or lives lost.

Obviously all of us at ALAN think about those things, too. But we also see something else: The huge amount of good that we as an industry have the potential to do.

While it may look like we're "just" delivering commodities, what we're really delivering is comfort. While it may appear that we are "merely" helping with the distribution of diapers, hygiene items, and clean-up materials, what we're really distributing is dignity. And while it may seem that the things we have a hand in providing are "simply" items like food, shelter and warmth, what we're really providing a lifeline to is hope – for survivors of disaster and for ourselves.

That's the power of compassionate logistics. Just as important, it's the power of you and your contributions.

On behalf of all of us at ALAN, thank you for being part of our ongoing story. Whether they're large or small, your in-kind and monetary gifts truly do empower, enable and inspire us. And we are more thankful for them than words can say.



# THANK YOU FINANCIAL DONORS

Please join ALAN in thanking all of our generous 2020 and 2021 Financial Donors.

## LEAD SPONSOR

Everstream Analytics  
Saddle Creek Logistics Services

## SUSTAINER

Food Shippers of America  
Gigunda Group  
GLT Logistics  
IWLA  
MHI  
Port Jersey Logistics, Inc  
UPS

## SPONSOR

Barcoding, Inc.  
CSCMP  
Transplace  
Transportation Intermediaries Association

## SUPPORTER

Burris Logistics  
Camrett Logistics  
Lansdale Warehouse  
Prism Logistics  
RBW Logistics Corporation  
Spartan Logistics, LLC  
The Shippers Group  
Wagner Logistics

## CONTRIBUTOR

Adelante SCM  
AWI Logistics  
Barret Distribution Center  
Benevity: American Online Giving  
Foundation  
The Columbus Foundation

CSCMP: Southern California Roundtable  
Daniel Insights  
Diannic Foundation  
Evans Distribution Systems  
First American  
Hassett Logistics  
Integrated Distribution Services  
Interchange Group, Inc.  
International Association of Plastics  
Distribution  
LeSaint Logistics, LLC  
North American Warehousing Company  
Optricity  
Parke Warehouses  
Roanoke Insurance Group  
Surge Transportation  
Taylor Logistics  
Tejas Logistics  
The M&W Logistics Group  
The Raymond Corporation  
United Facilities, Inc.  
Verst Group Logistics, Inc.  
Warehousing Education and Research  
Council (WERC)

## CORPORATE DONOR

Ad Hoc Logistics  
Amazon Smile  
Charity Gift Certificates  
Content Marketing Associates  
Distribution 2000, Inc.  
Drop + Hook | Social Media + Content  
Marketing  
Hall's Warehouse Corp.  
Iharrington Group  
Millennium International Consultants, Inc.

Ohio Logistics – Findlay's Tall Timbers  
Palmer Logistics  
Patriot Solutions  
Stumm Insurance  
The Terminal Corporation  
Unity in Disasters, Inc.  
Wilson Warehouse Co. Inc.

## PLATINUM PATRON

Mark Cabrera  
Mary and Eli Etherton  
Charles and Kathy Fulton  
Tom Herche  
Robert and Corinne Martichenko  
Clifford and Kathy Otto  
Maggie Owens  
Mark and Beth Richards

## GOLD PATRON

Mark and Sheila Benny  
Dr. Patricia Daugherty  
Marjorie DePuy  
Mike Gardner  
Mary Hadar  
Arthur Kelly  
Mary Long  
Jonathan Sabatini  
Howard Sargent  
Alan Van Boven

## SILVER PATRON

Julee Allen  
Stan Aronow  
Julian Blumenthal  
Clyde Coleman  
Jamison Day

Johan De Meulder  
Laurie Denham  
Theresa Garcia  
Toby Gooley  
John Haggerty  
Mitch Kostoulakos  
Leonardo Leonardo  
Brian Limperopulos  
Ian Mackinnon  
John Nofsinger  
Aaron Parks  
George Prest  
Natalie Putnam  
Leigh and Aaron Richards  
Geane and Richard Schubert  
Robin and Alan Siekerman  
Alex and Kelly Stark  
Taylor Wilkerson  
Duncan and Virginia Tenney  
John Wagner  
Taylor Wilkerson  
Roger Woody  
Gavin and Daisy Youngquist

## BRONZE PATRON

Mary Comens  
Bill Driscoll  
Brandon Greenberg  
Daniel Hahn  
Jocelyn Jones  
Susan Lacefield  
John Menzies  
Brian Mozhdghi  
Andrew Parks  
Matthew Walenciak

# THANK YOU IN-KIND DONORS & VOLUNTEERS

Please join ALAN in thanking all of our generous 2020 and 2021 In-Kind Donors and Volunteers.

---

## IN-KIND DONORS

Abel Womack  
Acme Distribution  
Acme Truck Lines  
Akers Packaging Service Group  
American Trucking Associations  
Apex Moving + Storage  
Bergen Logistics  
Burris Logistics  
Carolina Handling  
Carolina Tank Lines  
CE-DFW Warehouse Solutions  
CEVA Logistics  
CFI  
Core-Mark International  
Disaster Relief By Amazon  
Diversified Energy  
Double Diamond Transport  
Equipment Depot  
Gulf Packaging  
Hassett Express  
J.B. Hunt  
Hub Group  
Knight-Swift  
LiftOne  
International Paper  
Mack Trucks  
Miner Corporation  
Orbital Transport  
Penske  
Port TMS/MFW  
Prism Logistics  
Riverside Transport  
Schneider  
SEKO Logistics  
South Dakota Trucking Association  
Tennant Company  
Terminal Corporation  
Texas Trucking Association  
Twin Oaks  
Uber Freight  
UPS  
Wagner Logistics  
Wiese USA  
WTDC

---

## VOLUNTEERS

Jay Aertssens  
Sonia Anizor  
Michael Baker  
Connor Baskin  
Cassie Berman  
Cindie Blackmer  
Virgil Brown  
Zaid Burghliuh  
Ryan Cantrell  
Pauleth Charris  
Matt Clark  
Isaac Douglass  
Aastha Gupta  
Kelly Halloran  
Gwendolyn Hunnicutt  
Tanishka Jain  
Wenzday Jane  
Claire Kane  
Katy Keane  
Jack King  
Matthew Kling  
Olivia Kurschat  
Taylor Lachney  
Dylan Linette  
Mary Loeffel  
Mary Long  
Jeff Macias  
Kyle McCormick  
Kara Moore  
Kyle Nadler  
Lan Nguyen  
Selam O'Brien  
Chris Pittenger  
Vivek Ravi  
Mark Richards  
Laurent Ross  
Tadina Ross  
Robert Runyon  
Richard Sharpe  
Phurtemba Sherpa  
Delaney Shultz  
Samyuktha Sreeram  
Seth Sumrell  
Claire Tanoue  
Noelle Taylor  
Harsh Tekwani  
Meg Thornton  
Melissa Trevino  
Perry Trunick  
Alex Varnhagen  
Ralph Ware  
Roger Woody  
Danielle Zink